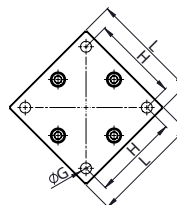
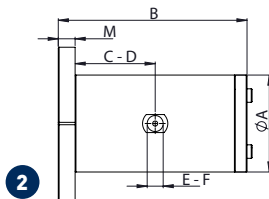
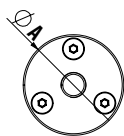
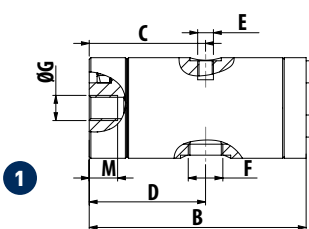




K - Linear pneumatic vibrators - Cushioned



OVERALL DIMENSIONS																								
Model	Drawing	A		B		C		D		E		F		G		H		L		M		Weight		
		mm	in	mm	in	mm	in	mm	in	mm	in	mm	in	mm	in	mm	in	mm	in	mm	in	kg	lb	
K 15 - K 15 LF	1	32	1.26	69	2.72	37	1.46	37	1.46	M5	1/8" BSPP	M8	/	/	/	/	/	/	9	0.35	0.17	0.37		
K 22 - K 22 LF	1	45	1.77	105	4.13	56	2.2	56	2.2	1/8" BSPP	1/8" BSPP	M10	/	/	/	/	/	/	13	0.51	0.5	1.1		
K 30 - K 30 LF	1	60	2.36	116	4.57	62	2.44	62	2.44	1/4" BSPP	1/4" BSPP	M12	/	/	/	/	/	/	13	0.51	1.03	2.27		
K 45 - K 45 LF	2	80	3.15	151	5.94	78	3.07	78	3.07	1/4" BSPP	3/8" BSPP	ø 8.5	72	2.83	90	3.54	15	0.59	2.86	6.3				
K 60 - K 60 LF	2	115	4.53	224	8.82	115	4.53	115	4.53	1/2" BSPP	1/2" BSPP	ø 13	102	4.02	130	5.12	20	0.79	4.6	10.14				

LF = Lubrication Free

FEATURES																													
Model	2 bar - 29 psi							4 bar - 58 psi							6 bar - 87 psi														
	Vibration		Force		Dynamic moment		Air consump.		Vibration		Force		Dynamic moment		Air consump.		Vibration		Force		Dynamic moment		Air consump.						
	VPM	N	lb	kg*cm	in*lb	l/min	cfm	VPM	N	lb	kg*cm	in*lb	l/min	cfm	VPM	N	lb	kg*cm	in*lb	l/min	cfm	VPM	N	lb	kg*cm	in*lb	l/min	cfm	
K 15	4,500	2.8	6.2	0.02	0.02	9	0.3	5,625	5.9	13	0.02	0.02	15	0.5	6,672	8.3	18.3	0.02	0.02	21	0.7								
K 22	2,850	9	19.8	0.21	0.18	32	1.1	3,450	14.2	31.3	0.21	0.18	50	1.8	4,050	19.6	43.2	0.21	0.18	73	2.6								
K 30	2,475	14.8	32.6	45	39	45	1.6	3,075	24.3	53.6	45	39	90	3.2	3,450	30.6	67.5	45	39	140	4.9								
K 45	1,800	38.6	85.1	1.94	1.68	56	2	2,250	68	149.9	1.94	1.68	125	4.4	2,625	92	202.8	1.94	1.68	194	6.8								
K 60	1,200	62	136.7	8.31	7.21	70	2.7	1,500	110	242.5	8.31	7.21	125	4.4	1,700	141	310.8	8.31	7.21	202	7.1								
K 15 LF	5,040	33.4	7.48	0.02	0.02	9	0.3	5,880	45.45	10.18	0.02	0.02	15	0.5	6,720	59.37	13.31	0.02	0.02	21	0.7								
K 22 LF	2,880	81.8	18.4	0.18	0.16	32	1.1	3,480	119.40	26.77	0.18	0.16	50	1.8	4,080	164.13	36.80	0.18	0.16	73	2.6								
K 30 LF	2,640	160	35.86	42	36	45	1.6	3,120	223.95	50.22	42	36	90	3.2	3,720	318.36	71.39	42	36	140	4.9								
K 45 LF	1,920	394	88.44	1.95	1.69	56	2	2,400	615.87	138.11	1.95	1.69	125	4.4	2,580	711.71	159.61	1.95	1.69	194	6.8								
K 60 LF	1,260	723	162.14	8.31	7.21	70	2.7	1,560	1,107.74	248.24	8.31	7.21	125	4.4	2,160	2,123.71	476.25	8.31	7.21	202	7.1								

LF = Lubrication Free

K - CUSHIONED LINEAR PNEUMATIC VIBRATORS

APPLICATION Hopper silo - compaction - vibrating feeder - table and channel

POWDER Hygroscopic - dusty and granular

PROBLEM SOLVING Detaching and compacting

FEATURES

DUTY CYCLE Continuous

WORKING PRESSURE From 2 bar to 6 bar (from 29 psi to 87 psi)

PNEUMATIC CIRCUIT K: Filter + flow control valve + lubrication + 3/2 ways valve
K-LF: Filter + flow control valve + 3/2 ways valve

AIR SUPPLY QUALITY K: Class 5.4.4
K-LF: Class 5.4.1

WORKING TEMPERATURE From -20°C to 130°C (from -4°F to 266°F)

MAX NOISE LEVEL 80dB(a)

TECHNOLOGY Piston pneumatic cushioned

ATEX II 2D CT(X) / II 2G CT(X)

MATERIAL Aluminium body